

## Light efficiency:

**111 Lumen/Watt**

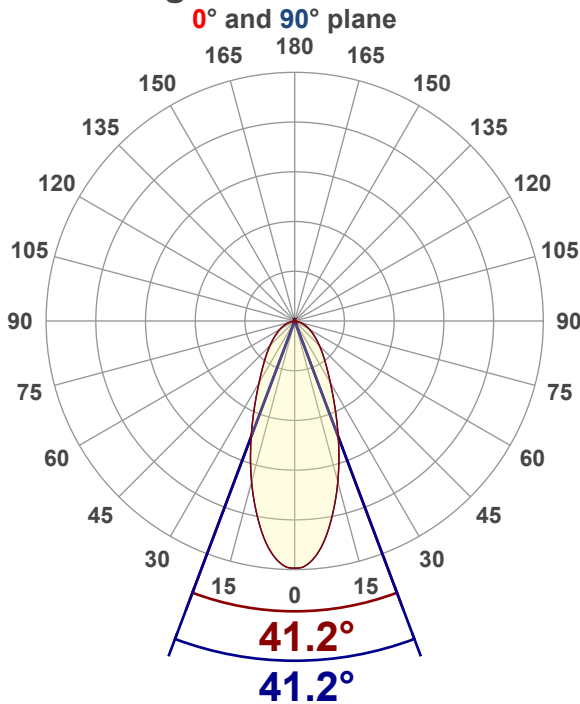
## Color temperature:

**3001 K**

## Light quality:

**CRI:96.4, R<sub>g</sub>:93.6, R<sub>f</sub>:100.7****P: 2 / V: - / F: 2****Output: 992 lm****Peak: 1150 cd****Power: 9.0 W****Voltage: 120 V****Current: 0.077 A****PF: 0.97****THD: 10.67 %**

## Angular Distribution



Product name:

**SCP4-9W-CCT-WH - 3000K**

Test Date:

**12/1/2025**Beam Angle (50% of the brightness of the centre):  
**41.2°**Field Angle (10% of the brightness of the centre):  
**105.2°**Cut Off Angle (2.5% of the brightness of the centre):  
**147.2°**

## Beam Details

\*measured at centre of beam

Mounting Height (feet)\(meter)	Lux*	Footcandles*	Beam width (feet) / (meter)
4 ft / 1.2 m	774 lx	72 fc	3 ft / 0.9 m
8 ft / 2.4 m	193 lx	18 fc	6 ft / 1.8 m
12 ft / 3.7 m	86 lx	8 fc	9 ft / 2.8 m
16 ft / 4.9 m	48 lx	4 fc	12 ft / 3.7 m
20 ft / 6.1 m	31 lx	3 fc	15.1 ft / 4.6 m

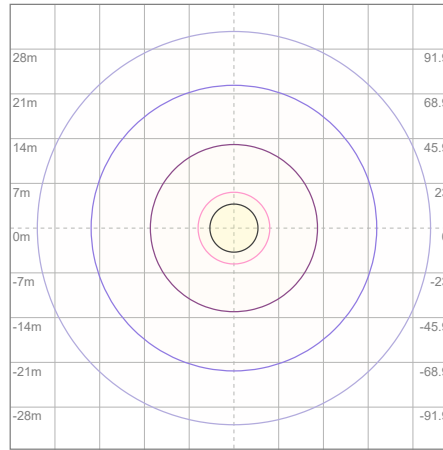
Beam center

## Photometric Testing Report

## Zonal Lumen Summary

Zone	Lumen	%Luminaire
0-30	519	52.32%
0-40	681	68.65%
0-60	900	90.73%
60-90	91.6	9.23%
70-100	31.5	3.18%
90-120	0.078	0.01%
0-90	992	100.00%
90-180	0.283	0.03%
0-180	992	100.00%

## ISO Lux Diagram



Mounting height: 3.05 meters (10 feet)

Lux at center:	124 lx
3%	3.72 lx
5%	6.20 lx
10%	12.40 lx
30%	37.20 lx
50%	62.00 lx

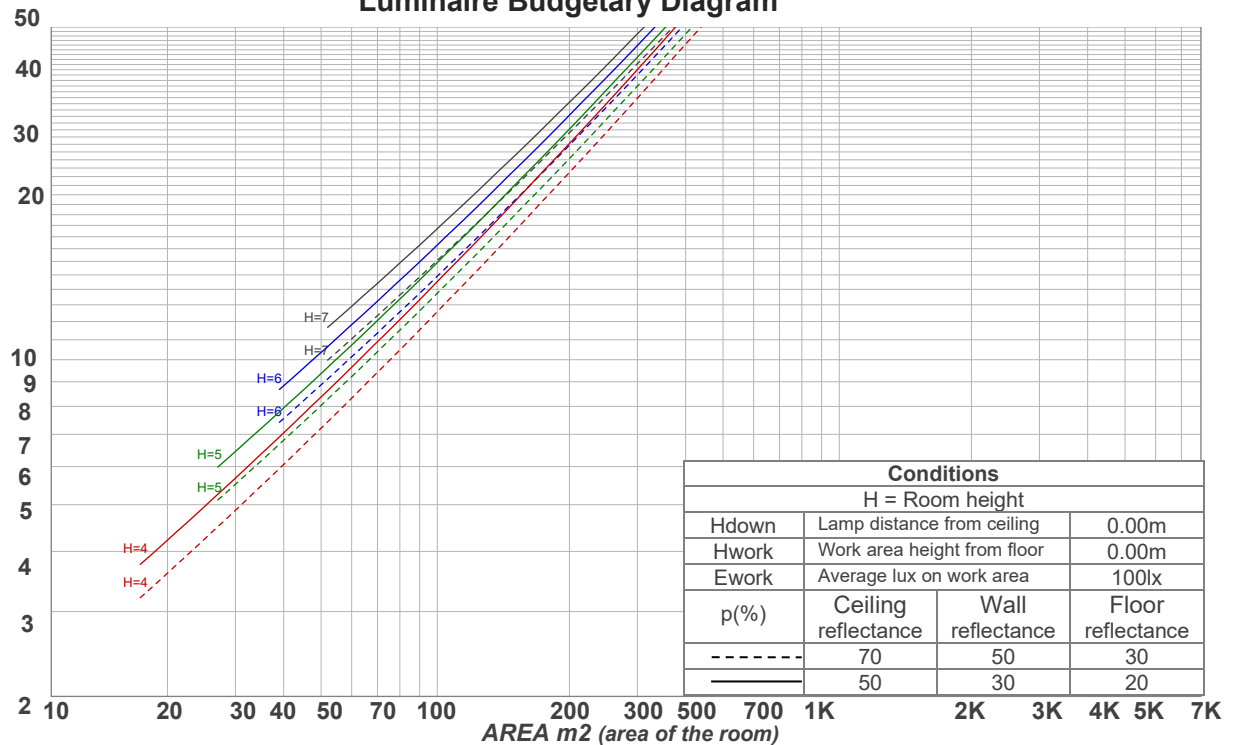
**Conditions:**  
Number of planes: 8  
Lux distribution on a surface when lamp is mounted at 3.05 meters from the surface.

## Coefficients of Utilization

Ceiling reflectance	80				70				50			30			10			0
Wall reflectance	70	50	30	10	70	50	30	10	50	30	10	50	30	10	50	30	10	0
Floor reflectance	20	20	20	20	20	20	20	20	20	20	20	20	20	20	20	20	20	0
RCR	(RCR: Room Cavity Ratio)				Room Values are expressed as percentage of Lumens delivered to the task surface													
0	119	119	119	119	116	116	116	116	111	111	111	106	106	106	102	102	102	100
1	112	108	105	102	109	106	103	100	102	99	97	98	96	94	94	93	91	90
2	104	98	93	88	102	96	91	87	93	89	85	90	86	83	87	84	82	80
3	97	89	83	78	95	88	82	77	85	80	76	82	78	75	80	76	73	72
4	91	82	75	70	89	80	74	69	78	73	68	76	71	67	74	70	67	65
5	85	75	68	63	84	74	68	63	72	66	62	70	65	61	69	64	61	59
6	80	70	62	57	79	69	62	57	67	61	57	66	60	56	64	60	56	54
7	76	65	58	53	74	64	57	53	63	57	52	61	56	52	60	55	52	50
8	72	61	54	49	70	60	53	49	59	53	48	58	52	48	57	52	48	46
9	68	57	50	45	67	56	50	45	55	49	45	54	49	45	53	48	45	43
10	65	54	47	43	64	53	47	42	52	46	42	51	46	42	51	46	42	41

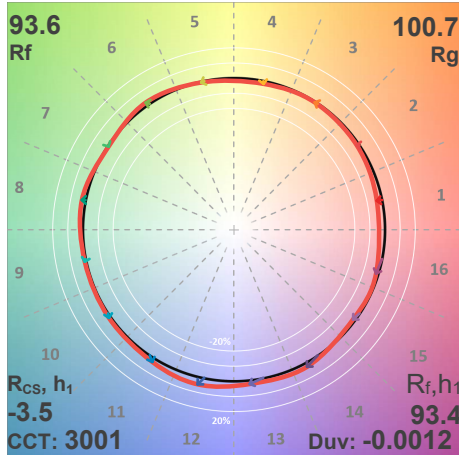
LAMPS (number of lamps)

## Luminaire Budgetary Diagram

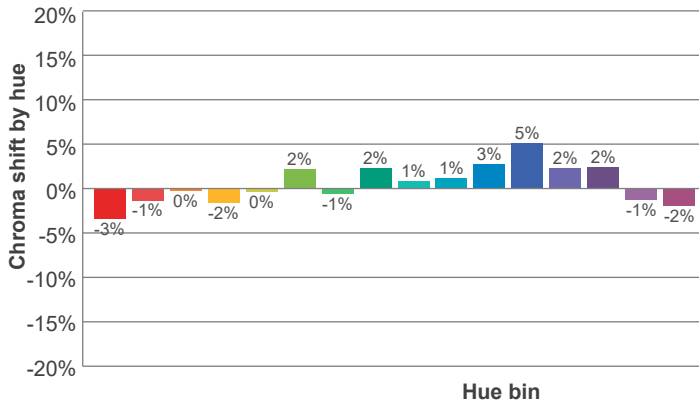
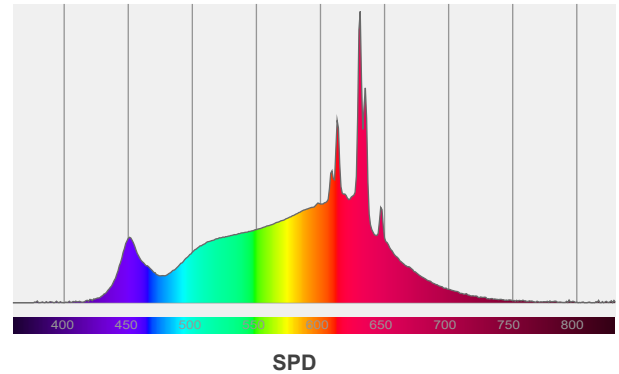
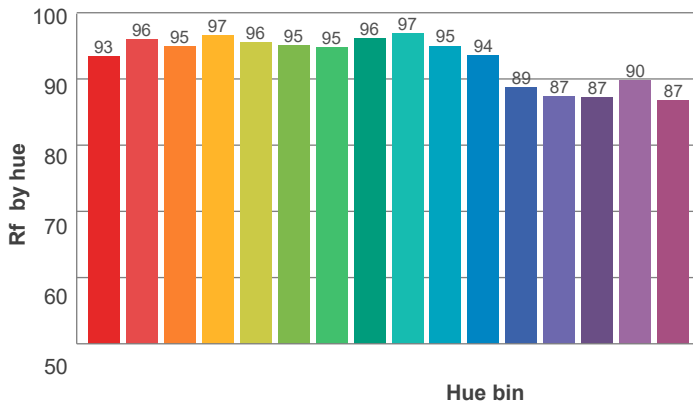
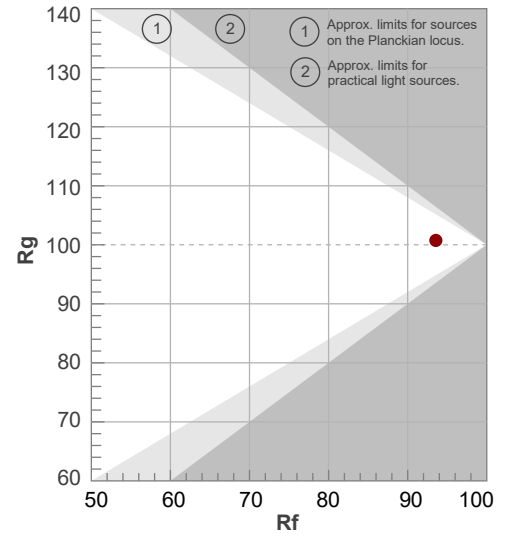


ANSI/IES TM-30-18

P: 2 / V: - / F: 2



Hue Bin	R <sub>f</sub>	Shifts (%)	
		Chroma	Hue
1	93	-3%	0%
2	96	-1%	1%
3	95	0%	2%
4	97	-2%	-1%
5	96	0%	2%
6	95	2%	2%
7	95	-1%	0%
8	96	2%	0%
9	97	1%	2%
10	95	1%	3%
11	94	3%	4%
12	89	5%	-3%
13	87	2%	-10%
14	87	2%	-10%
15	90	-1%	-6%
16	87	-2%	-10%



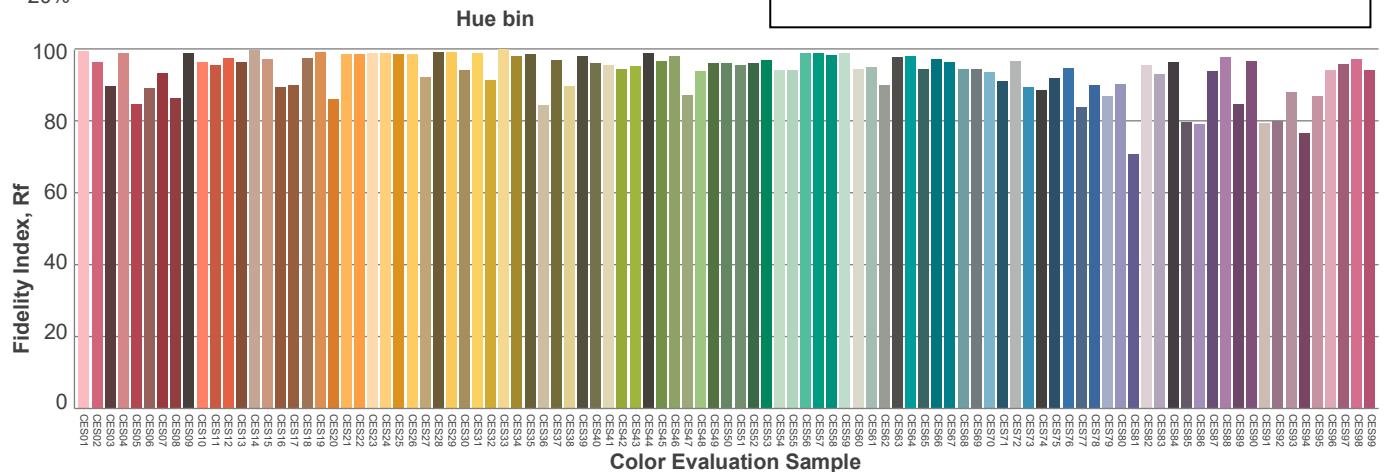
Red: 31.2%, Power=4.3mW

Blue: 9.7%, Power=5.1mW

Green: 27.8%, Power=11.8mW

UVA: 0.1%, Power=0.0mW

Dominant Wavelength: 584nm

1<sup>st</sup> Peak Wavelength: 631nm2<sup>nd</sup> Peak Wavelength: 613nm

### Glare Evaluation According to UGR

p Ceiling		70	70	50	50	30	70	70	50	50	30
p Walls		50	30	50	30	30	50	30	50	30	30
p Floor		20	20	20	20	20	20	20	20	20	20
Room size X      Y		Viewing direction at right angles to lamp axis					Viewing direction parallel to lamp axis				
2H	2H	26.2	27.1	26.4	27.3	27.5	26.2	27.1	26.4	27.3	27.5
	3H	27.0	28.0	27.4	28.2	28.4	27.0	28.0	27.4	28.2	28.4
	4H	27.3	28.2	27.7	28.5	28.7	27.3	28.2	27.7	28.5	28.7
	6H	27.5	28.3	27.8	28.6	29.0	27.5	28.3	27.8	28.6	29.0
	8H	27.5	28.3	27.8	28.6	29.0	27.5	28.3	27.8	28.6	29.0
	12H	27.5	28.2	27.9	28.6	29.0	27.5	28.2	27.9	28.6	29.0
4H	2H	26.5	27.5	26.9	27.7	27.9	26.5	27.5	26.9	27.7	27.9
	3H	27.7	28.4	28.1	28.8	29.2	27.7	28.4	28.1	28.8	29.2
	4H	28.0	28.7	28.4	29.1	29.6	28.0	28.7	28.4	29.1	29.6
	6H	28.2	28.9	28.7	29.2	29.6	28.2	28.9	28.7	29.2	29.6
	8H	28.2	28.8	28.7	29.2	29.6	28.2	28.8	28.7	29.2	29.6
	12H	28.2	28.7	28.7	29.1	29.6	28.2	28.7	28.7	29.1	29.6
8H	4H	28.1	28.7	28.6	29.1	29.4	28.1	28.7	28.6	29.1	29.4
	6H	28.4	28.8	28.9	29.3	29.8	28.4	28.8	28.9	29.3	29.8
	8H	28.5	28.8	29.0	29.4	30.0	28.5	28.8	29.0	29.4	30.0
	12H	28.5	28.8	29.1	29.3	29.9	28.5	28.8	29.1	29.3	29.9
12H	4H	28.1	28.6	28.6	29.0	29.4	28.1	28.6	28.6	29.0	29.4
	6H	28.4	28.8	28.9	29.3	29.9	28.4	28.8	28.9	29.3	29.9
	8H	28.5	28.8	29.1	29.3	29.9	28.5	28.8	29.1	29.3	29.9
Variation of the observer position for the luminaire distance S											
S = 1.0H		0.2 / -0.3					0.2 / -0.3				
S = 1.5H		0.5 / -0.8					0.5 / -0.8				
S = 2.0H		1.0 / -1.3					1.0 / -1.3				
Standard table		n/a					n/a				
Correction summand		n/a					n/a				
Corrected glare indices referring to 992 lm total luminous flux											

Due to our continued efforts to improve our products, product specifications are subject to change without notice. Please refer to our website for the latest test results.